

SUMMER 2022

KELSALL PARISH COUNCIL NEWSLETTER

This being our first newsletter for a while, it contains a summary of events over the last year, and more on recent and upcoming activities.

What's happening?

Kelfest is taking place on Sept 11th. It's the new village festival, organized by KPC and many local volunteers!

This first event is also Kelsall's official Platinum Jubilee event and lottery Jubilee funding will allow us to keep it free.

We're getting busy on **green spaces** too. In addition to the trees & wildflowers on the Green, we've got a few projects to improve other green spaces - including one to obtain new community green space.

Would you like to get involved?

We're looking forward to the opening of the new Medical Centre and Wellbeing Hub, which we supported since it was only an aspiration, all through planning stages, and lately through financial contribution to the Hub.

Kelsall Parish Council will be creating a **new village website** this autumn, similar to our Parish Council site. If you run a local group, please let us have up-to-date information and pictures to include. This 'turn-key' website, very easy to update, will need someone to act as **webmaster** going forward – can you help?

We are buying a new **defibrillator** to install on Kelsall Green. It will go in a cabinet on the small brick hut near the playground, and be available to all in case of an emergency.



Kelsall.org

Contact
us

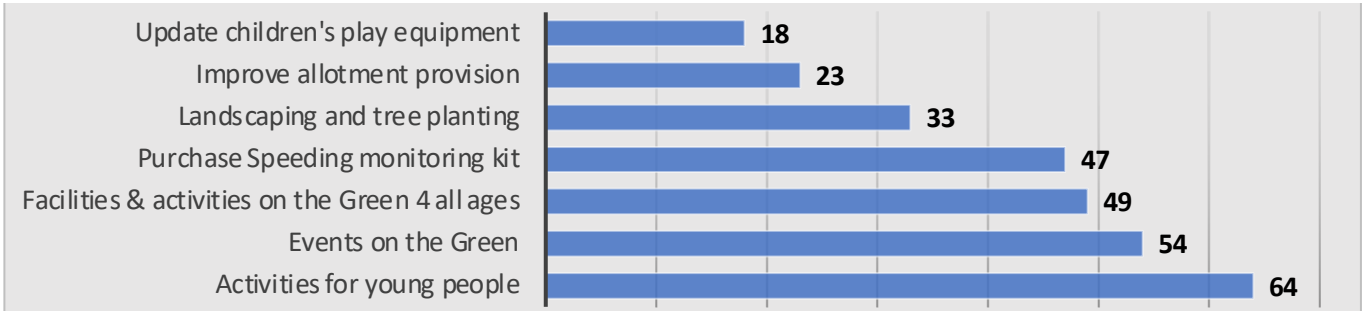
www.Kelsall-pc.org.uk or Clerk@kelsall-pc.org.uk

Or find us on Facebook at www.facebook.com/KelsallParishCouncil

What we did in the past year

Two years ago we asked residents where we should focus our resources (besides the large part of our budget that goes on maintaining the Green and the playground.).

The ranking of options was as follows:



We have made progress on most of these:

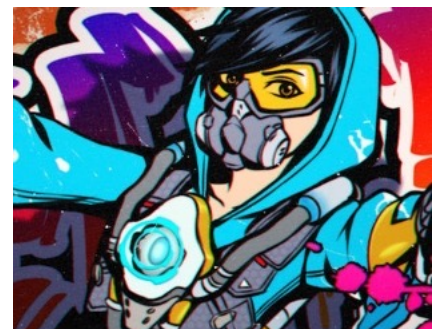
- Adult fitness equipment was installed on the Green this July.
- A group of Parish Councillors and residents is organising an event on Kelsall Green on Sept. 11, named Kelfest – Hopefully the first of many!
- We've set up a Community Speedwatch group, which is part of speeding enforcement involving Cheshire Police and CWAC



- We've planted more trees in green spaces, including one to commemorate the Queen's Platinum Jubilee, and on road verges (where possible), and made a start on two wildflower areas on Kelsall Green.

Unfortunately, we've been less successful when we tried to set up a Youth Working Group. A volunteers group started but was short-lived, and we could also not recruit a youth worker to lead the efforts, even though we obtained funding.

The intention is now to work through the Wellbeing Hub, who will be offering sessions for young people - but they still need help.



← Design for the Wellbeing Hub (opening Oct 22)

Can you join the team?

Kelsall Parish Council should have 9 Councillors but has been making do with 7 or less for a few years.

If you want to help us look after and improve our village, please get in touch! You can help as a councillor or as a member of one of our working groups.

- Events on the Green group
- Green Spaces & wildlife group (see below)
- Community Speedwatch
- Youth activities team (together with Wellbeing Hub)
- Kelsall.org webmaster

OR look up what else we do on our website and FB page!



Could you help maintain the new village website?
The website is 'pre-formatted' and it's just a matter of loading material – probably less than 2hrs / week.

Getting more from our green spaces

Kelsall Parish Council owns & maintains the Green, the allotments and the small space by the Methodist Church. We have planted several new trees there in the last year and made a wildflower area on the Green..

We now want to improve some other, under-used green spaces. We're planning to start with this corner, at Chester Road & Church St north, which would be quite suitable for a herb bed – a free pick your own!

Can you suggest others such 'wasted spaces' in Kelsall?

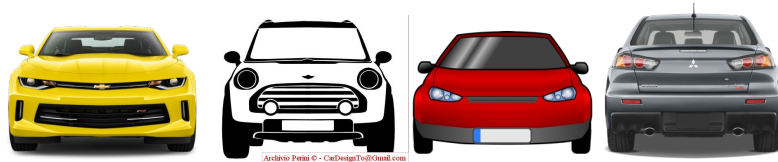
We are also looking to get hold of a larger piece of land for community uses. We will update everybody as soon as there is news on this.

Get in touch if you'd like to get involved in these projects!



Keeping you informed

Church Street car park



Parking in Kelsall is viewed as a problem by many residents. KPC only own the car park in Church Street, where congestion is often a problem. After reviewing the use of the Church Street car park, and the 2021 survey of residents on possible solutions, we are acting on the majority opinion that a time limit on free parking would help.

We will introduce a two-hour time limit for free parking, to be enforced by Cheshire West parking wardens, combined with some provision for nearby residents with no parking on their own, and businesses.



This will provide some parking to those who need it, while keeping some spaces free for visits to the shops

Cheshire West have also agreed to add double yellow lines opposite the exit of the car park, which should help with congestion on Church Street.

The parking wardens should also monitor on-street parking when they visit.

Highways updates

We are reviewing long-standing problems with Cheshire West & Chester highways, including:

- Maintenance of the culverts on Willington Lane and Flat Lane
- The works on Quarry Lane, which should start this summer

Some discussions were more successful than others. For example we obtained some speeding data from CWAC, but they clarified that they wouldn't be carrying out speeding enforcement.

We are now going to progress this with Cheshire Police.

Have you got a long—standing issue with highways that isn't getting resolved? Please let us have the CWAC report number and a description, and we can chase it as part of our regular update with Highways.

➤ *Remember – if it's not logged, CWAC won't know about it and cannot fix it!*



Over to you!

We can all help!

This autumn, if you have a hedge bordering a road or footpath, please check how wide it has become. If it grows over the pavement, please arrange to have it cut back harder in the autumn or winter. In many places hedges have narrowed the pavements a great deal.

Please help make Kelsall nicer for all other residents!